

# Asociación de Ayuda a Pacientes Hemato- Oncológicos

*ASAPHE*



# Background



## Who we are:

A NGO dedicated to find solutions and bring support for people who suffer hemato-oncological illnesses and GIST, managed and administered by volunteer patients.

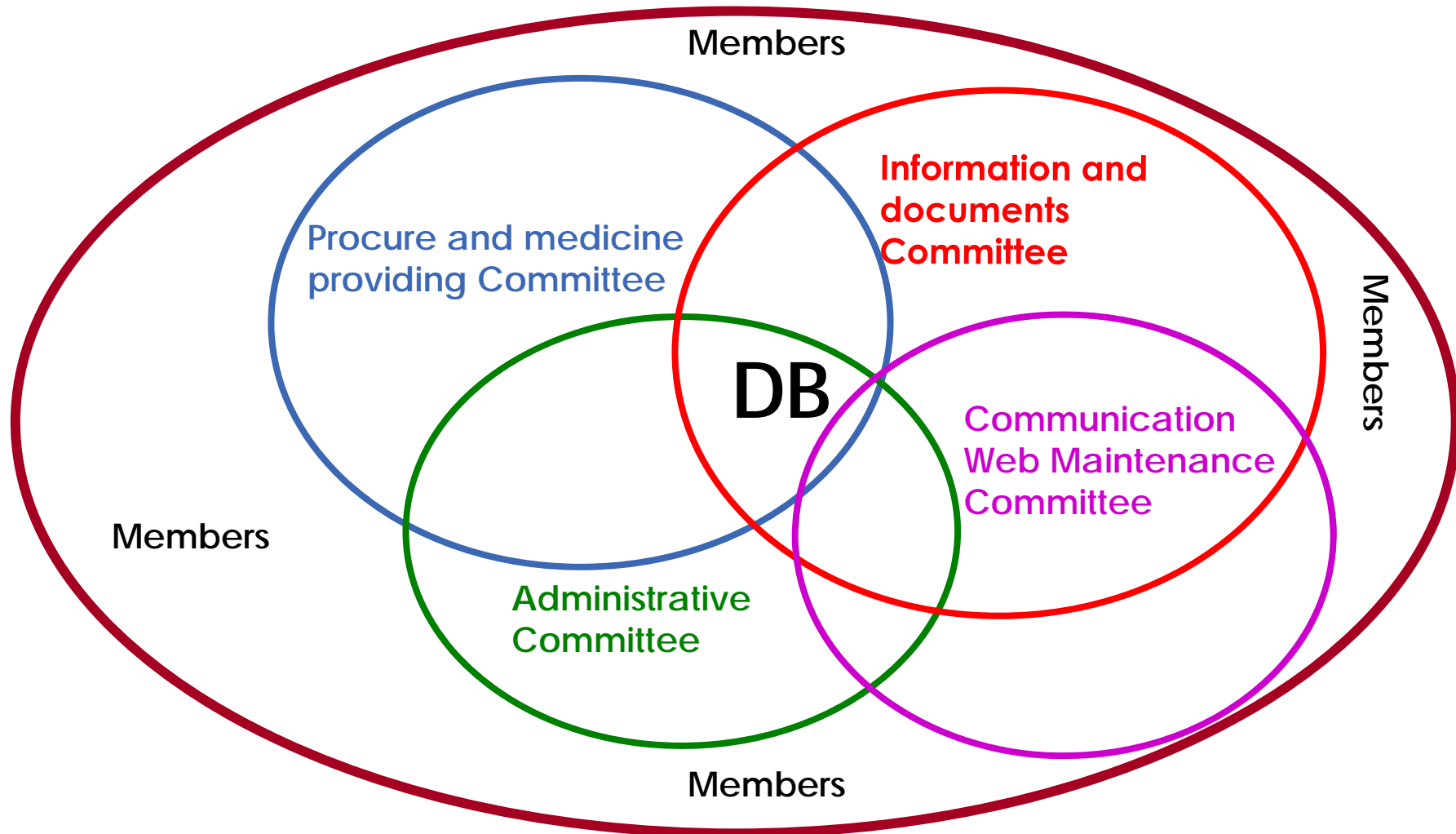
## What was the motivation to create it:

Lack of information and the need of support for people with these illnesses.

## Mission:

To help people with hemato-oncological illnesses and GIST, to receive a comprehensive attention which would allow them to maintain their quality of life and achieve an active integration into society.

# ORGANIGRAM



# How we work

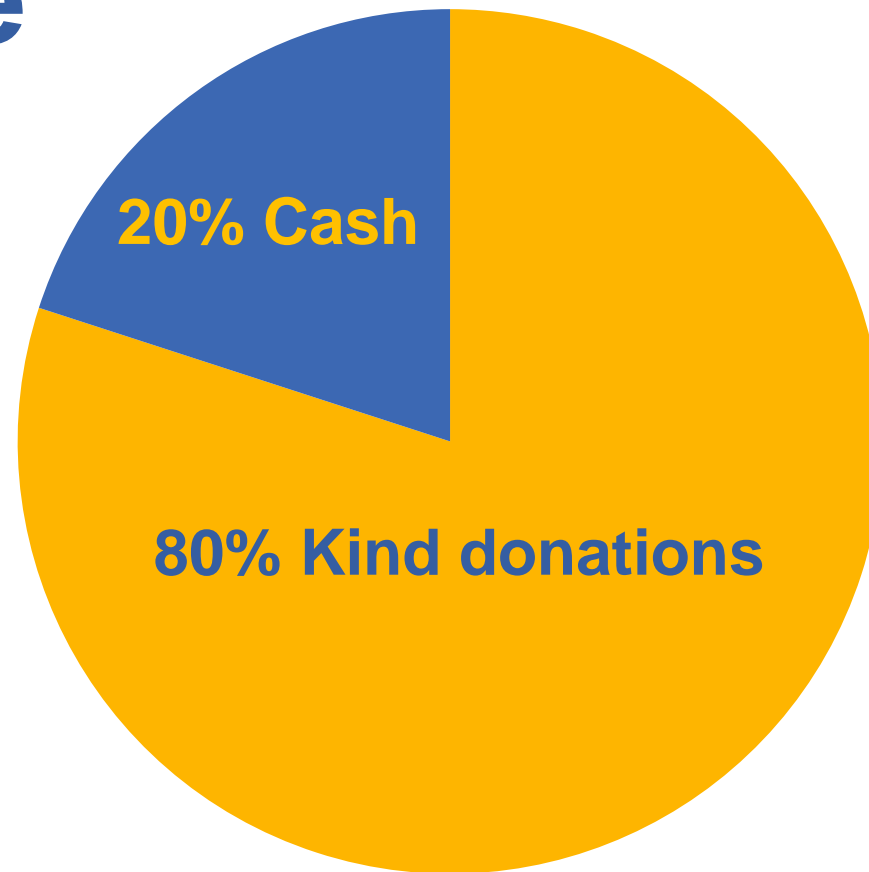


- Circular structure based on shared leadership and individual abilities management.
- Volunteer members have responsibilities and are responsible for its activities.
- Members´ work is totally voluntary.
- Members are trained for their functions
- Members promote solutions and changes with the help of the DB.

# Funding



## Income



# Programs



## A - Patients' support

- ✓ Information and education.
- ✓ Psychoemotional support.
- ✓ Adocacy and defense.

## B - Institutional streghthening

- ✓ Staff management training.
- ✓ Volunteer recruiting and training.

# New Project



**Support and guidance to patients to attain better treatment adherence.**

# Achievements



- Recognition by hemato-oncology doctors and their advice to patients to seek help and information from the Association.
- To be respected and partially heard by the authorities in the Venezuelan Institute of Social Security.
- Recognition for our work in the Latin Alliance Web.
- Recognition and support by the Max Foundation.
- To be the national reference association in Venezuela.



# Conclusions



- ✓ This model of association is viable in Latin America due to its characteristics and low cost.
- ✓ A team with clear objectives, commitment, task oriented and perseverance is a key element .
- ✓ Shared leadership generates trust and obtain the best from volunteers.

# Conclusions



- ✓ **A work team based on competencies generates a good work.**
- ✓ **Shared values and a clear definition of functions and responsibilities are the key success factors.**

# Photos



# Photos

