

# DAR AL AMAL

## ONE YEAR OF SERVICES TO CANCER PATIENTS

**Bahija GOUIMI**

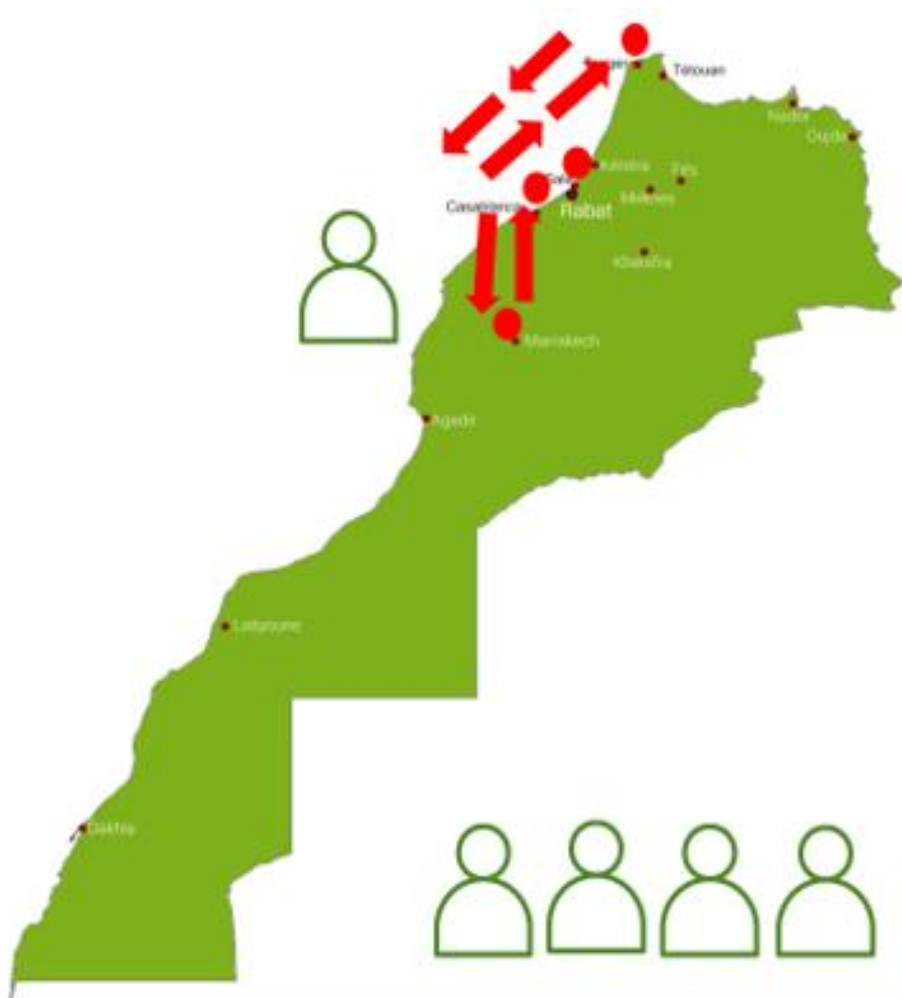
**Association des Malades Atteints de Leucémies**

**AMAL MOROCCO**

Advocacy Session #3  
Best practice in patient advocacy  
#CMLHZ23



### *Problem statement and background*



**Care centralization**



**Expenses**



**No total health insurance coverage**



**Social and economic impacts (Job loss, divorce, drop out of school, ...)**



**Risk of treatment abandonment**

Activer Windows  
Appuyez sur les paramètres pour activer



# DAR AL AMAL Inauguration – World CML Day 2022

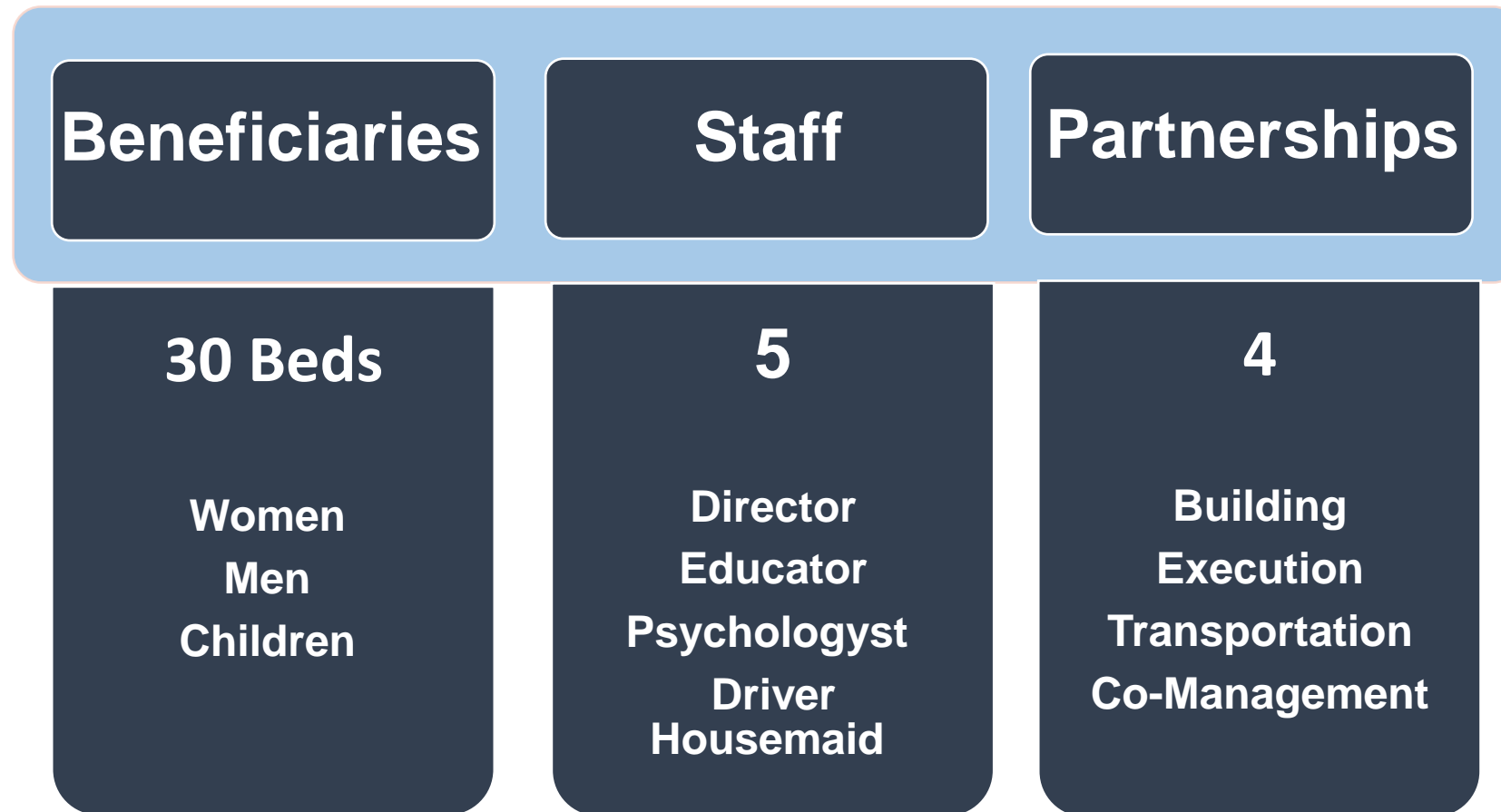


#WCMLD22  
#CureCML

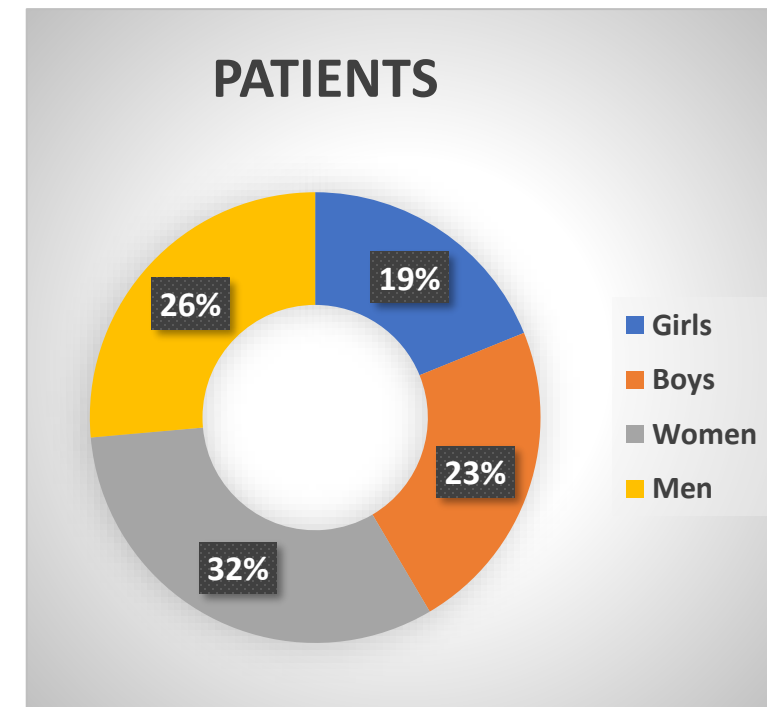
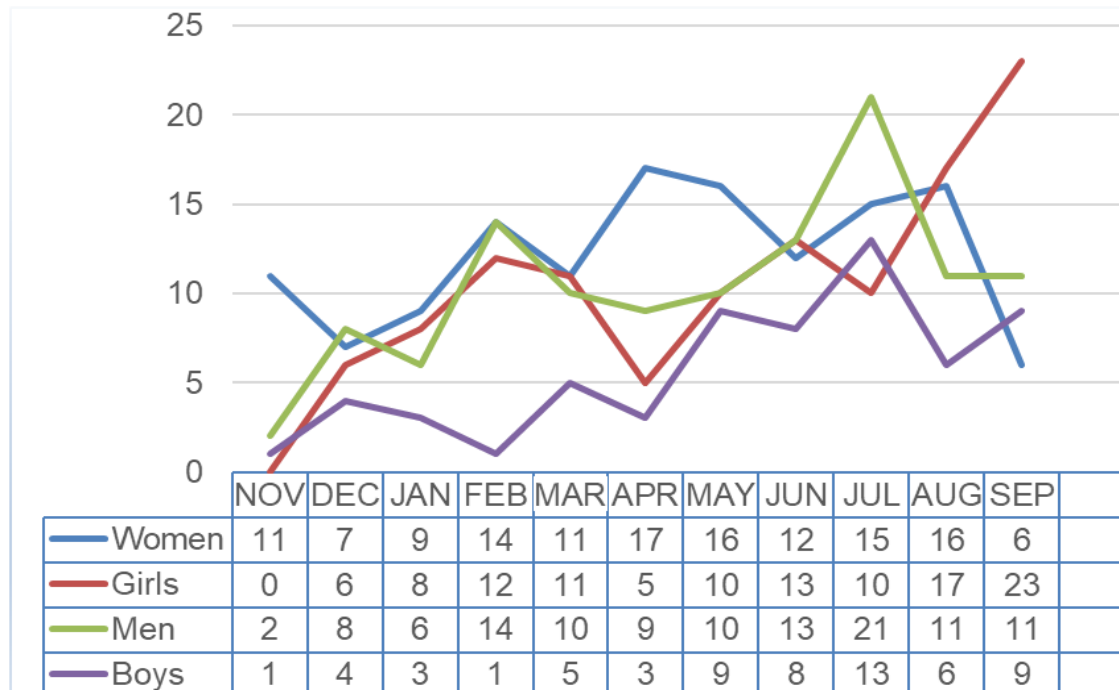


# CML Horizons October 2022, Marrakech - Morocco

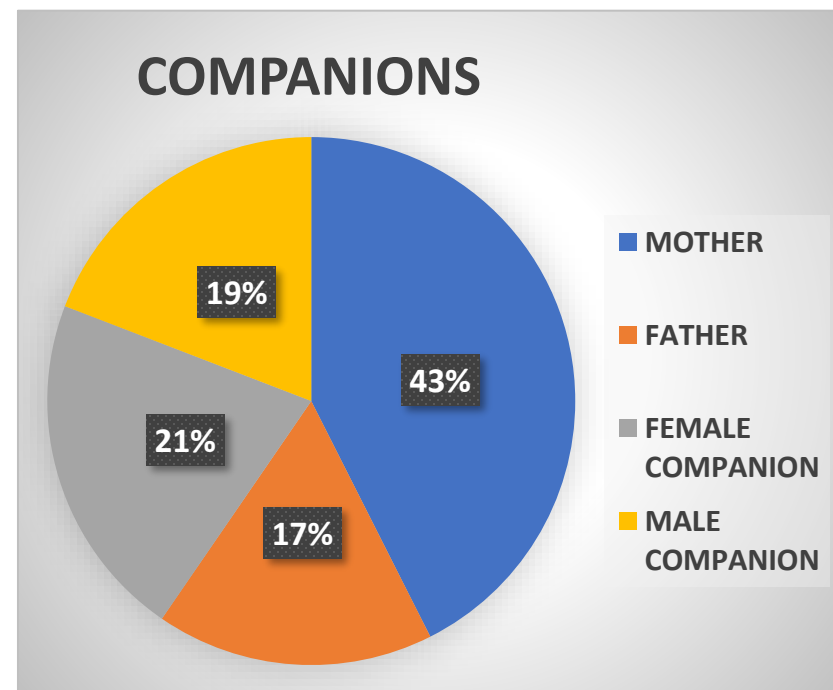
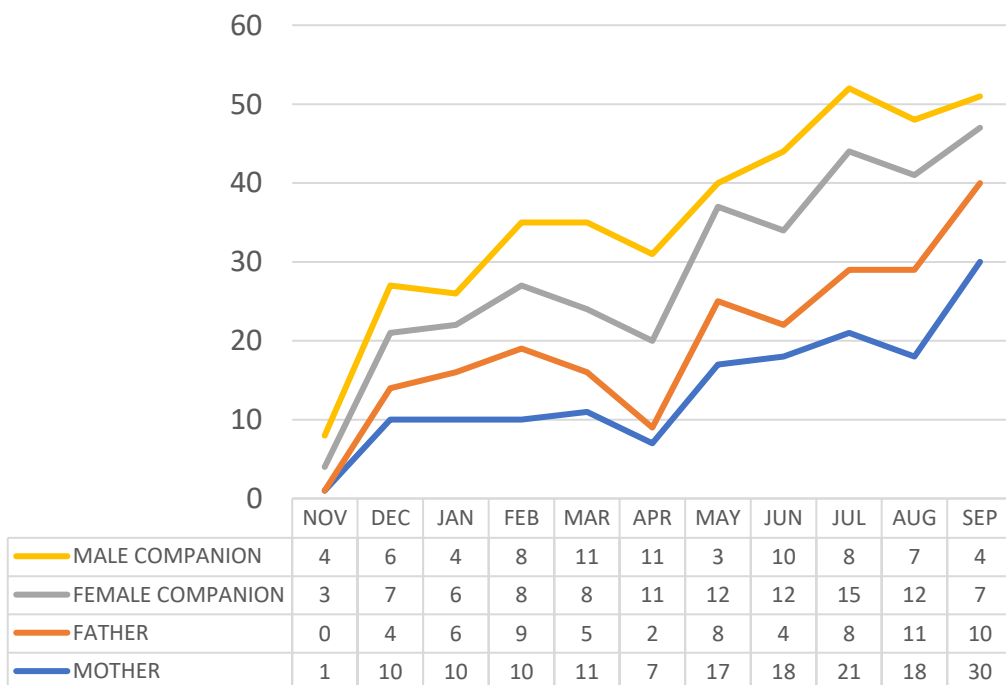




## Evolution of Beneficiary Patients

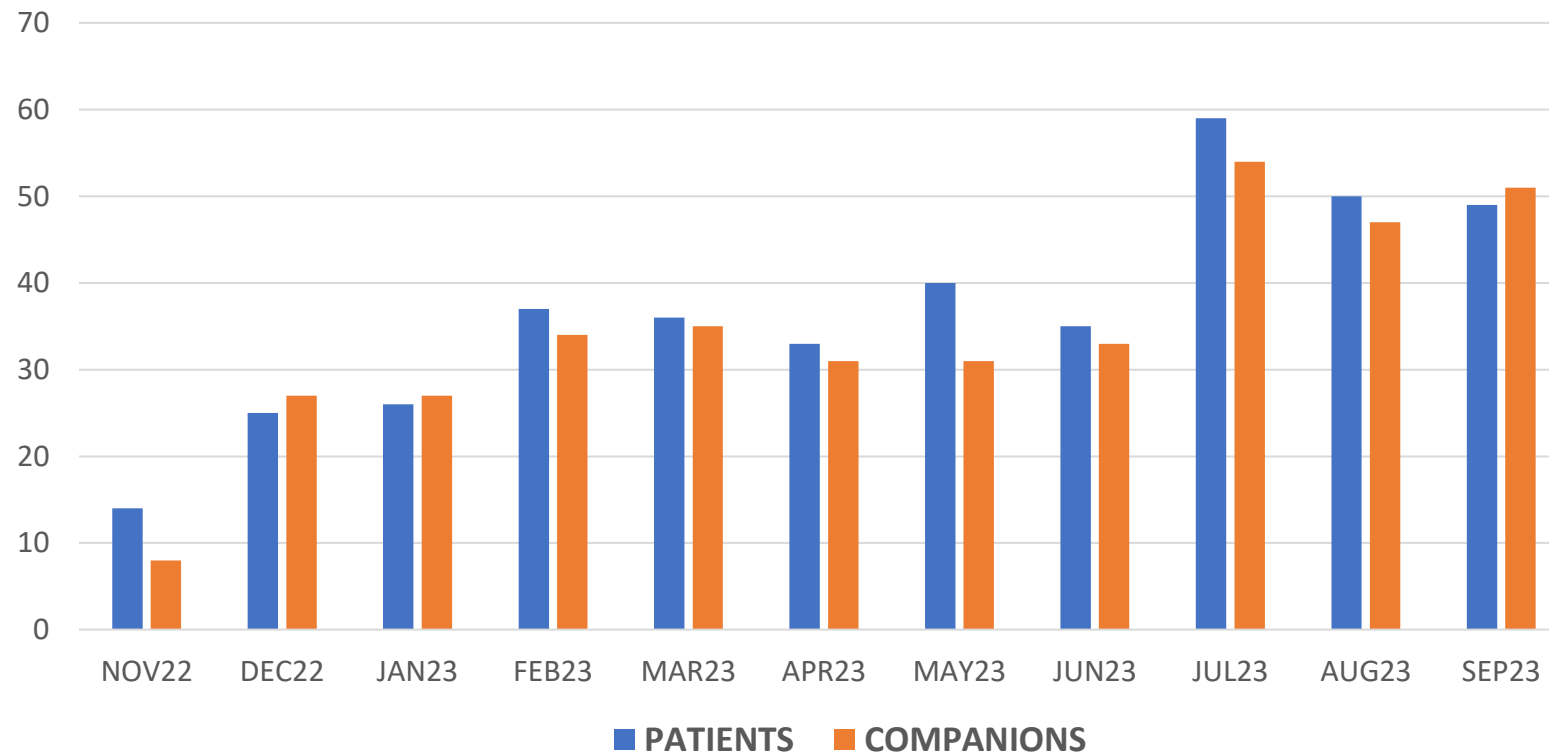


## Evolution of Beneficiary Companions

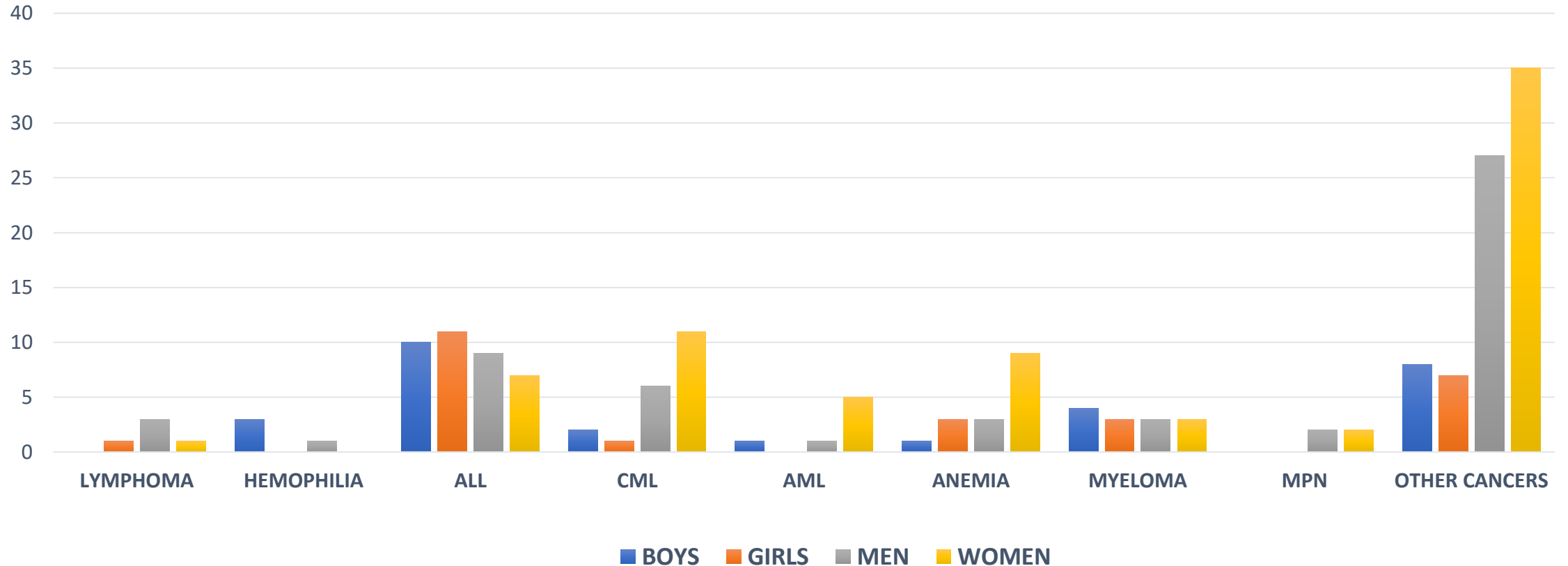




## Evolution of Transport Beneficiaries



## Types of Cancers



## Financial resources



## One year of services to cancer patients



**3000 \$**  
**Blood tests**



**77 639 \$**  
**Medications**



**991**  
**Clothes**



**833**  
**Meals**



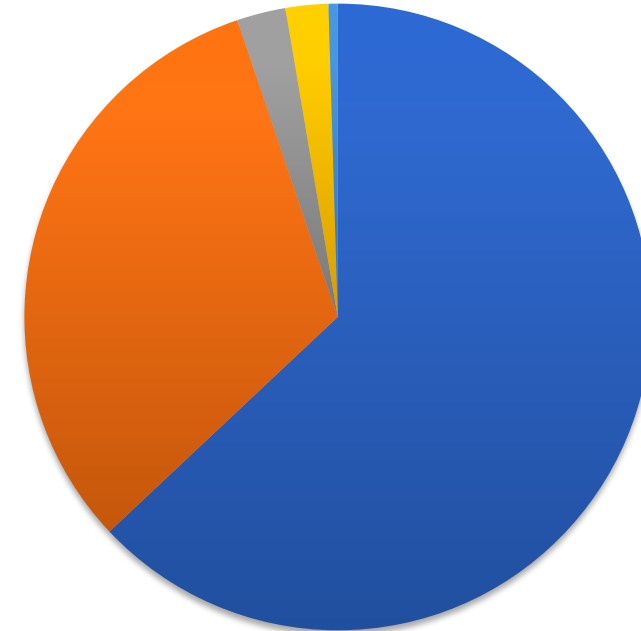
**2 Cars**  
**14 Places**



**2596**  
**Bed nights**



**635 Visits**



- Public
- NGOs
- Journalists
- Pharma
- Government

## Results & Impact

- **Reduce the rate of treatment abandon**
- **Ensure Safety and Equity access care for all cancer patients**
- **Allow Patients to stay close to the hospital**
- **Reduce repetitive travel expenses**
- **Provide peer moral support**
- **Share experiences / Plan activities / Therapeutic education / Counseling**
- **Liberate the hospitalization beds in the hospital for the most urgent cases**

## Conclusion & Recommendation

- **Think about the durability of the project**
- **Look for permanent partnerships**
- **Do not account on the government subventions**
- **Patience / Flexibility / Transparency**